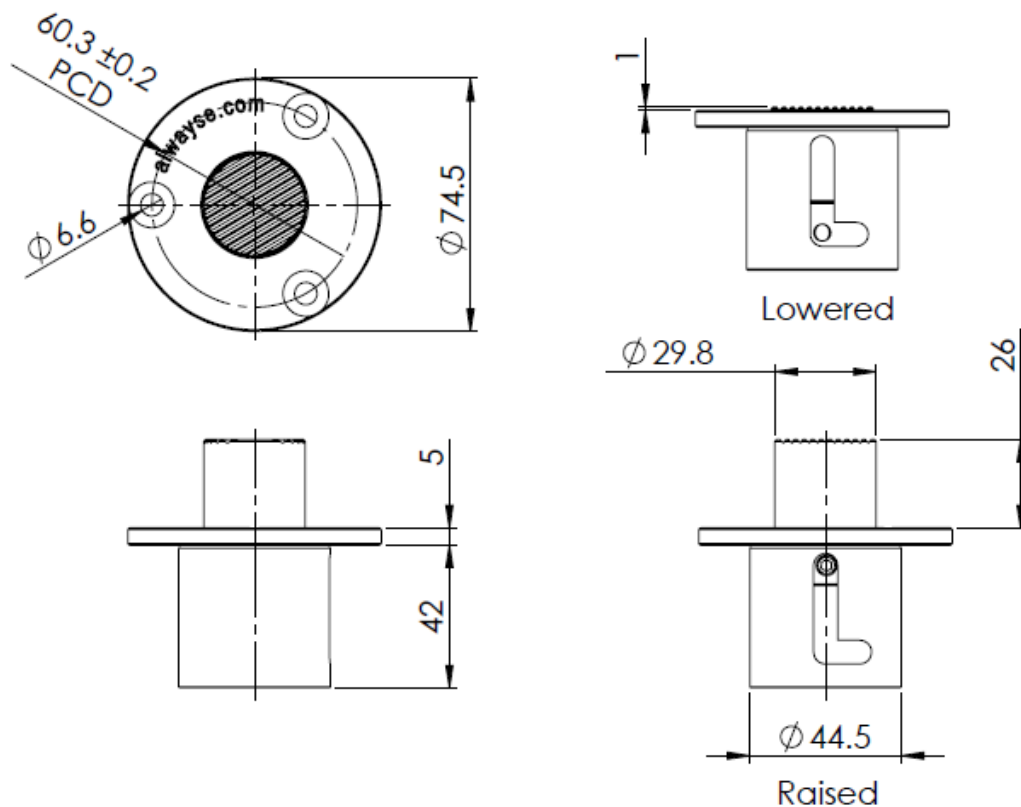


FS0113 FOOT STOP DATASHEET



REF No.	WEIGHT (kgs)	FLANGE DIAMETER (mm)	FLANGE THICKNESS (mm)	BODY DIAMETER (mm)	FIXING HOLE DIAMETER (mm)	HOLE CENTRES (mm)	STOP DIAMETER (mm)	STOP HEIGHT (mm)
FS0113	0.515	Ø74.5	5	Ø44.5	Ø6.6 CSK	60.3 +/-0.2 PCD	29.8	26

MATERIALS

Housing - Carbon steel with zinc plated finish for corrosion resistance

KEY FEATURES

- Strong robust steel design for durability
- Spring loaded mechanical stop to prevent loads from moving on a ball deck
- Simple operation to lock stop in lowered position by pressing down on the stop with your foot and twisting your foot anti-clockwise to lock into position.
- To raise the stop press down on the stop with your foot and twist your foot clockwise to disengage the stop to allow it to raise up under spring pressure.
- Low profile design that can be used in ball decks with low height of just 50mm
- Operation temperature range of -30°C to +80°C